

Nightingale Highlights

FEBRUARY 2021



SXO 6100D-CH



Full Line Catalog Preview

Introducing Nightingale's Full Line Catalog

Nightingale is proud and excited to launch our Full Line Catalog.

The Full Line Catalog is a straight-forward extensive marketing piece that is simple to understand, visually impactful and is intended to peak clients' interests to further explore Nightingale products.

Inside our booklet you will find over 50 product series and 321 models showcased. The Catalog covers all applications and product categories: Conference, Guest, Healthcare, Ergonomic Task, Stackable, Executive, Lounge, Sit/Stand chairs.

Our Catalog displays all product series and models in a monochromatic color palette so not to distract the eye and keep the focus on the products' design and quality.

A **PDF** version of the Full Line Catalog is available online for download on Nightingale's website. It can be found by

hovering over the Resources page, going to Digital Assets, clicking Lookbook and selecting Full Line - Catalog. In addition, a product specific Full Line Series sheet is available on each individual product page of the website, under the Resources tab. This means reps, dealers, designers and end-users all have unlimited access to Nightingale's product offerings.

Clients can request further marketing literature such as product brochures, specification sheets, fabric cards and a price book by contacting their sales rep.

The Full Line Catalog joins Nightingale's Lookbook to provide you with detailed product images and design inspiration. Please note that our At-A-Glance brochure is still available upon request but is being phased out.

Nightingale Wins Best Contract Seating Manufacturer 2020



Nightingale has been named Best Contract Seating Manufacturer for 2020 by the North America Business Awards presented by New World Report.

Nightingale is joining the likes of Harvard University, Bank of Montreal, Royal Bank of Canada, SAP, and Xerox as winners of the New World Report North America Business Awards.

The North America Business Awards identify market leaders in all industries who deliver quality products and services to a diverse clientele. The awards are judged purely on merit and reward standout companies who go a step further to ensure their clients' expectations are exceeded.

Nightingale won the title of Best Contract Seating Manufacturer for 2020 based on criteria relating to client dedication, innovation, longevity, business growth, online presence, customer feedback/satisfaction, and overall business performance.

Winning this award exposes Nightingale to more than 100,000 businesses across Canada, United States, Mexico, South America, and the Caribbean.

This recognition speaks to Nightingale's commitment to customer satisfaction, product quality and innovation. Nightingale is proud to be named Best Contract Seating Manufacturer for 2020 by New World Report.

Nightingale's New Arc-Com Fabric Card



Nightingale is excited to showcase its newest fabric offerings curated in collaboration with Arc-Com Studio. The launch of this unique Arc-Com fabric card adds 20 new detailed patterns to Nightingale's comprehensive textile portfolio.

These new upholstery selections are rich in color and texture, providing customers with distinctive quality fabric options that are bound to enhance their Nightingale sitting experience.

Customers can now choose from a selection of Arc-Com's premium textiles to further customize the look of their Nightingale chair. All patterns have been tested for abrasion strength and lightfastness to ensure long-lasting finishes that match the life cycle of Nightingale chairs.

These durable fabrics can be easily cleaned by one, or a combination of, the following methods: mild dry-cleaning solvents, a water-based cleaning agent, or bleach. Over half of the featured Arc-Com fabrics are bleach-cleanable. Furthermore, Arc-Com's Apollo pattern is a completely sanitary textile option as it can be disinfected of all surface germs and bacteria.

In service for nearly 50 years, Arc-Com is a leading designer, manufacturer and supplier of design-driven high-performance textiles and wallcoverings. Arc-Com has presented Nightingale with an impressive upholstery portfolio that is vivid in vibrant colors, textures, and patterns to ensure extensive fabric options that will turn any design vision into reality.

Arc-Com caters to the unique needs and desires of the hospitality, healthcare, corporate and institutional markets. Their design process carefully considers cost, functionality, durability and environmental impact, resulting in high-quality woven textiles that are safe and minimally impact the environment.

Nightingale is pleased to unveil our Arc-Com fabric card and provide customers with even more unique and quality textiles to choose from.

Please visit www.nightingalechairs.com to view the new Arc-Com collection along with our entire selection of extensive textile offerings.

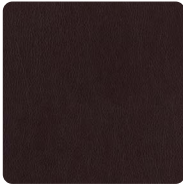
Selection of Nightingale's New Arc-Com Textiles



Apollo



Atmosphere



Bronco



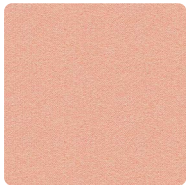
Cadence



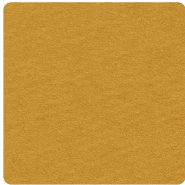
Cavo



Drifter



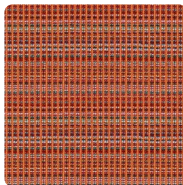
Emerson



Encore



Engrave



Evolution



Hush



Insight



Intaglio 2



Majorca



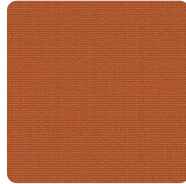
Sherlock



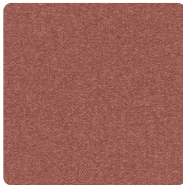
Sherlock 2



Soho



Tailored



Transform



Watson

The Next Phase of Office Design



Danforth II 1221

From cubicles to open concept, the idea of optimal office design is constantly evolving. The most recent interpretation of the modern workplace is inspired by the home, with offices utilizing warm colors, natural lighting and soft seating. Companies are realizing the importance of their office space as a tool to attract and retain the very best talent. Employee well-being and comfort are top-of-mind with today's leading employers.

Along with office spaces embracing a more natural, inviting and home-like atmosphere, biophilic design is also being incorporated. Biophilic design has companies bringing outdoor elements into the work environment. This is accomplished through the addition of plants, increased access to natural light and air and in some cases the installation of living walls.

Employee health and safety is integral to productive corporate environments and the pandemic has further emphasized this need. When looking to return to the office, it is recommended that businesses find ways to alter their open concept layouts to include more room for employees to safely work in a distanced manner. Installing high-grade air filtration systems will further enhance workplace safety.

Although it's unknown when workplaces will open, it is certain

that as they do, these themes will be integrated. Nightingale has a wide selection of chairs that are applicable to each of the design themes mentioned above.

Nightingale's Lounge Seating line has 15 chair series all with multiple model options that will bring a sense of home comfort to your office. The Dougie and Stephanie can be ganged to provide couchlike seating options that will boost workplace productivity and collaboration.

Nightingale is one of the country's Greenest Employers and is committed to building products with minimal carbon footprints that are recyclable, sustainable and durable. All our products are made in our waste-free facility powered by clean energy. In 2019, our WXO, CXO and LXO chairs were Green Good Design Award winners. Due to our environmental policy, any Nightingale chair is appropriate to incorporate into offices that are looking to embrace green design initiatives.

Nightingale has easily cleanable textiles and antimicrobial fabric options that will ensure workplace cleanliness and safety. Our unique fabric options will provide companies and employees with peace-of-mind when heading back to work.

Benefits of Sit-to-Stand Seating

Nightingale has a robust line of sit-to-stand stools: NLC, WXO, LXO, VXO, Sherman, Ultima, Bradley, Poly Medical and Surgeon Console. Our sit/stand line has successfully been incorporated into medical and commercial offices and are now entering the home market.

In particular, Nightingale's NLC, WXO, LXO and VXO stool models are perfect chairs to pair with any sit-to-stand desk to enhance your corporate or work-from-home lifestyle. Below are some benefits to using sit/stand stools:



ONE
Mobility

Users can easily switch from a seated to standing position. Changing positions throughout the workday is key to staying active at your desk and avoiding aches and pains.



TWO
Reduced Pressure on Joints

Transitioning between sitting and standing will improve blood circulation and take pressure off your feet and knees.



THREE
Enhanced Sitting Experience

All Nightingale products have a unique ride that supports and interacts with the user as they move. Our stool models elevate this experience by further promoting good posture, engaging the core and prompting you to sit properly throughout the day.



FOUR
Increased Productivity

Sit/stand stools encourage standing which boosts energy, reduces stress levels and helps you work more efficiently.

Nightingale is excited to provide seating options to fulfill the needs of office and at-home workers who desire a more engaging and active workday.

Adore the Amalfi

Nightingale's Amalfi is a versatile, modern yet classic conference chair that will uplift any workspace.



AMALFI 1900



AMALFI 1900TL

Nightingale created this lightweight, durable and effortlessly stylish chair to bring an air of astonishment to your boardroom. With its distinguished slim design, the Amalfi is sure to inspire all users who sit in it.

The Amalfi boasts several ergonomic features that provide maximal comfort and support:

- **Wishbone Arms** – These stylish unique polished aluminum arms provide the Amalfi with its dramatic appearance. The chair's base and mechanism are also polished aluminum to deliver an overall cohesive appearance.
- **Enersorb™ Technology** – Enersorb™ seat and back foam conforms to your body and disperses your weight ergonomically to improve blood circulation and relieve pressure points.

- **Height Adjustment** – The Amalfi's pneumatic height adjustment allows users to simply adjust the chair's height either up or down.

- **Swivel-Tilt Mechanism** – With the 1900TL series, this midback executive chair comes equipped with a single position lock in an up-right position, along with height adjustment and tension control. The 1900TL provides the user with more customizable capabilities and further enhances the sitting experience.

The Amalfi can be upholstered in a variety of Nightingale's high-quality textiles, vinyls and leathers. With a wide selection of colors and grades to choose from, we make customizing your chair easy and enjoyable.

ABOUT US

Founded in 1928, Nightingale is a contract seating manufacturer that puts purpose before profit. By collaborating with top designers, engineers and research teams, we create quality ergonomic products that are good for your body and the planet. Nightingale is one of the country's Greenest Employers and is committed to building products with minimal carbon footprints that are recyclable, sustainable and durable. All our products are made in our waste-free facility powered by clean energy. As one of the country's Best Managed companies, Nightingale's commitment to comfort, quality and innovation drives our vision to be a global industry leader.

We invite you to visit us at www.nightingalechairs.com to view all our quality seating options, obtain virtual literature, use the My Chair Maker app, learn more about our green initiatives and discover Nightingale's story.



CONTACT

General Information

Sales Inquiries

ISO 14001 & 9001 CERTIFIED
TB117-2013 COMPLIANT

Main Office

(905) 896 3434

info@nightingalechairs.com
www.nightingalechairs.com

Customer Care

1 (800) 363-8954

customercare@nightingalechairs.com

