

LOOKBOOK

DESIGN INSPIRATION

 *Nightingale*



BE GOOD TO THE PLANET.

Sitting down doesn't mean being stagnant. Innovate, improve, progress.

LANDFILL SUCKS

— 0% of our waste goes to landfills.

Each person directly impacts 3 other people in their daily life — **make a positive impact.**

If you notice a gap, **DON'T WAIT** for someone else to bridge it.

BE A PIONEER.

Test everything to the **BREAKING POINT.**

That's how you make it

STRONGER.

ETHICAL BUYING

is a **commitment**—not a catchphrase.

Care about

people, the planet, your work, yourself. Life is about making an impact, not a fortune.

GET INVOLVED.

Make personal connections—not just business ones.

Take Risks:

the only thing that should be in your 'comfort zone' is your chair.

Respect your body:

exercise, eat well, laugh with friends, choose ergonomic chairs.

Never stop learning.

We're into research panels, CEU courses, and innovations at **Nightingale U.**

Have a purpose and find others who share it.

The best results are **driven by collaboration.**

Quality matters.

Never settle for less.

Make mistakes: they are a part of growth.

Take a holistic approach: nothing exists in a vacuum.

Take vacations & mental health days.

Go out to dinner. Wake up early to watch the sunrise. There's more to life than working.

There's a story behind almost everything in life. **Tell it.**

we care.

This is our story.

We are a contract seating manufacturer that puts purpose before profit. By collaborating with top designers, engineers, and research teams, we create quality ergonomic products that are good for your body and the planet. Our designs prove you don't have to choose between aesthetics and comfort.

The best results come when employees are empowered, inspired, and have a good work-life balance. Whether it's flexible hours, maternity/paternity leave, vacation, sick, mental health, or just 'me' days, we offer a variety of work options to ensure our people are taken care of.

Because we believe life is about making an impact, not a fortune, our designs aim to stir a response in the user—whether it be inspiration or simply “this chair is comfy!” Our factory is powered by wind and solar energy, and everything we touch gets reused or repurposed in adhering to our ‘landfill sucks’ policy of zero-waste. We support the Urban Beehive Project in hopes that these incredibly important insects can keep buzzing around, pollinating 90% of food crops worldwide.

Our fabulous team of employees are committed to making a difference: we care about people, the planet, and quality. By working together to brainstorm, create, and improve, we produce durable, design-forward chairs.



[nightingalechairs.com](https://www.nightingalechairs.com)

TESTING FACILITY

In our state-of the art testing facility, we test all elements of our products to the breaking point, then work to make them stronger. Our Engineering and Quality control team works constantly to stretch the limits of what is possible in modern seating. Because of our stringent testing procedures, Nightingale is pleased to offer our lifetime limited warranty on all products. Our chairs are built right and built to last.

INNOVATION LAB

Our Innovation Lab is a think-tank of designers, engineers, and our Research & Development team. Taking a collaborative approach, we study trends from both inside and outside our industry, identify gaps, and brainstorm how to bridge these. Then we develop prototypes, which, after many rounds of building, re-thinking, and testing, become innovative Nightingale products. Our research is both market-based and customer-based. Many of our best innovations have come from customers, clients, and employees saying aloud, "I wish I had a chair that..." In the Innovation Lab, we respond to real-world problems and new customer ideas by asking "Why not?"

NIGHTINGALE U

We believe that life is about constantly experiencing and learning. In keeping with our commitment to change, innovate, and inspire, we developed Nightingale U, our in-house learning facility for employees, industry-personnel, and interested members of the community. Teaching everything from how to make a chair with the least environmental impact (like our IC2, which is 98% recyclable) to how to minimize stress on the legs through a sloped seat and a thick memory foam, Nightingale U strives to develop future talent that will help lead the future of product design, one seat at a time.



since 1928



Office Lounge



DANFORTH II 1222-CH, 1221-CH
LOUNGE
Designer III Collection
Continuum | CONT019 | Brick



CRICKET II 502
STACKABLE

Designer II Collection
Fedora | FED019 | Tangelo

Conference Room



SODA 1701 CONFERENCE

Solid Collection
Vox | VOX07 | Turquoise
Vox | VOX10 | Goldenrod



WXO 5800M
ERGONOMIC TASK
Black Mesh

Collaborative Office



IC2 7300-UFST, 7300D-UFST-TC3
ERGONOMIC TASK
Stretch Collection
Moguls | MO2691 | Waterfall



TUXEDO 3500-CH
ERGONOMIC TASK
Leather Collection
Madras | 176 | Black

Collaborative Office



LEGACY 1600

ERGONOMIC TASK

Pattern & Solid Collection
Propensity | PROP1 | Amber
Boom II | BOOM17 | Mirror



MXO 5900-CH
CONFERENCE

Designer III Collection
Theory | THRY008 | Port



LAKESHORE 1302

LOUNGE

Leather Collection

Princess | 429 | Charcoal



JOEY 1310, 1312
LOUNGE

Designer Collection
Fuse | FUSE09 | Carmine

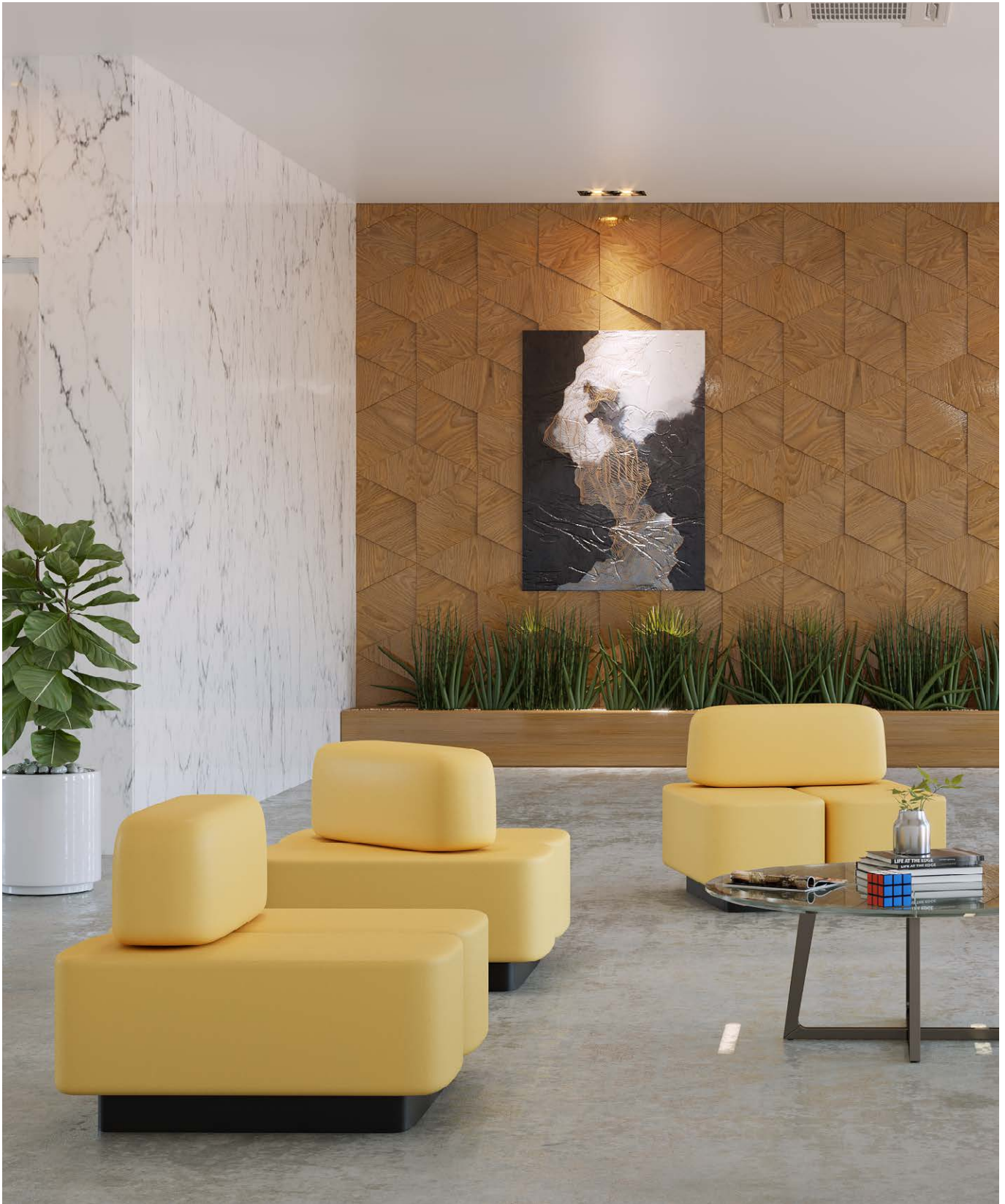


STOOL 1000WB
STOOL, SPECIALITY
PVC Free Collection
Turner | TURN19 | Pacific Blue



SURGEON 1864
ERGONOMIC TASK
PVC Free Collection
Premier | PREMI37 | Lagoon

Collaboration Room



RANE 901

LOUNGE

PVC Free Collection
Beeline | BEL16 | Sisal



DOUGIE 830
LOUNGE

Solid Collection
Vox | VOX02 | Limelight

Office Lounge



HELEN 925

LOUNGE

Designer III Collection
Theory | THRY034 | Peacock
Variant | VARI001 | Barn Red



MIKEY 1500
LOUNGE

PVC Free Collection
Beeline | BEL19 | Sundance

Co-working Office



BRADLEY 6800D-MT

ERGONOMIC TASK

Solid Collection

Felt Melange | FELT10 | Pollen



DANY 8400
ERGONOMIC TASK
Pattern Collection
Propensity | PROP12 | Pavona

Break Room



BUTTERFLY 811UFST, 809UFST STACKABLE

Designer & Designer III Collection
Continuum | CONT002 | Saffron



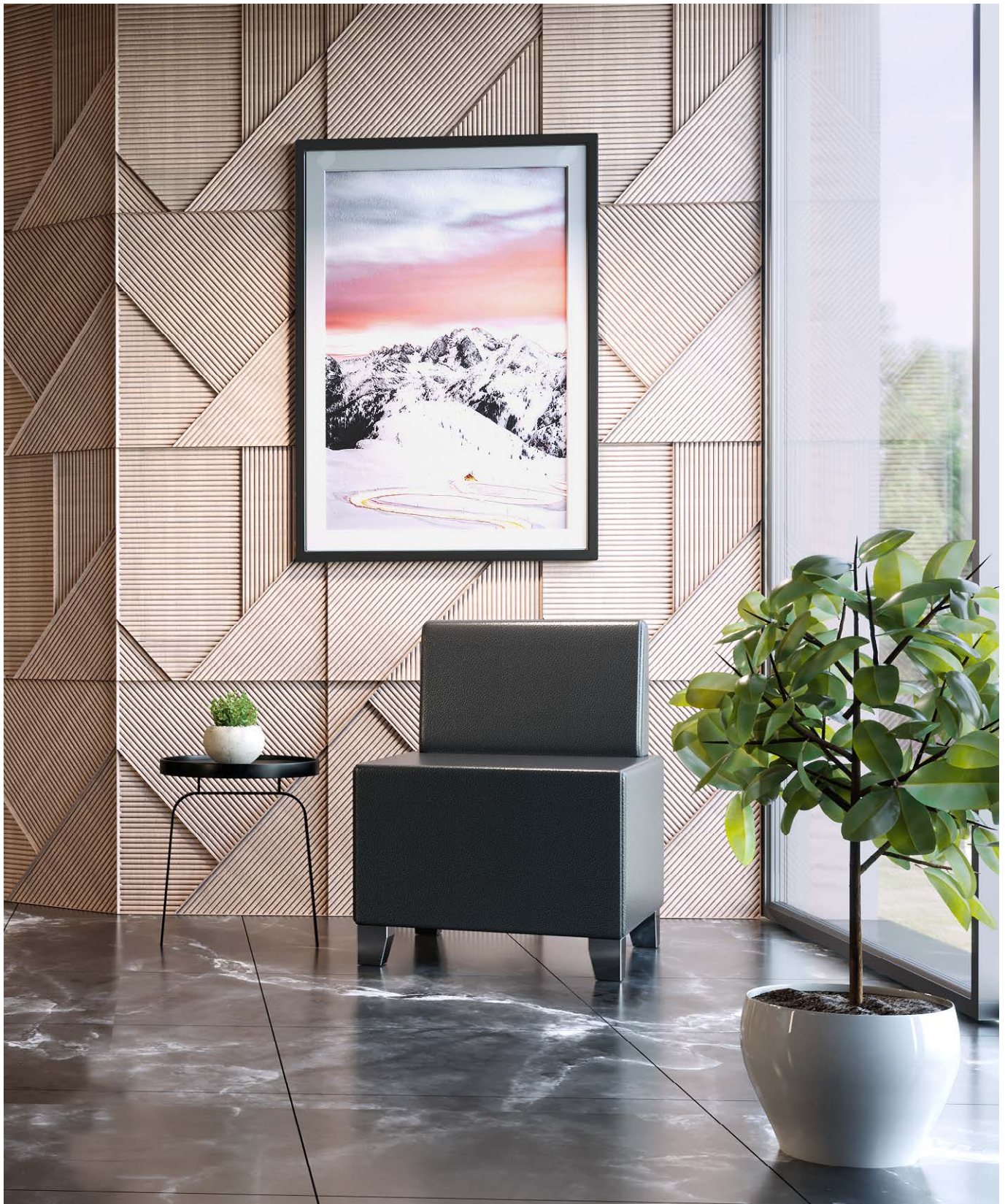
FIREFLY II 200UF-CA
STACKABLE

Foundation/Heavenly Collection
Foundation | F66 | Olive

Collaboration Room



TRULLO 3001-DT-EL, 3002-DT-EL
LOUNGE
Princess Leather
Princess | 187 | Cashew (Inner)
Princess | 194 | Marine (Outer)

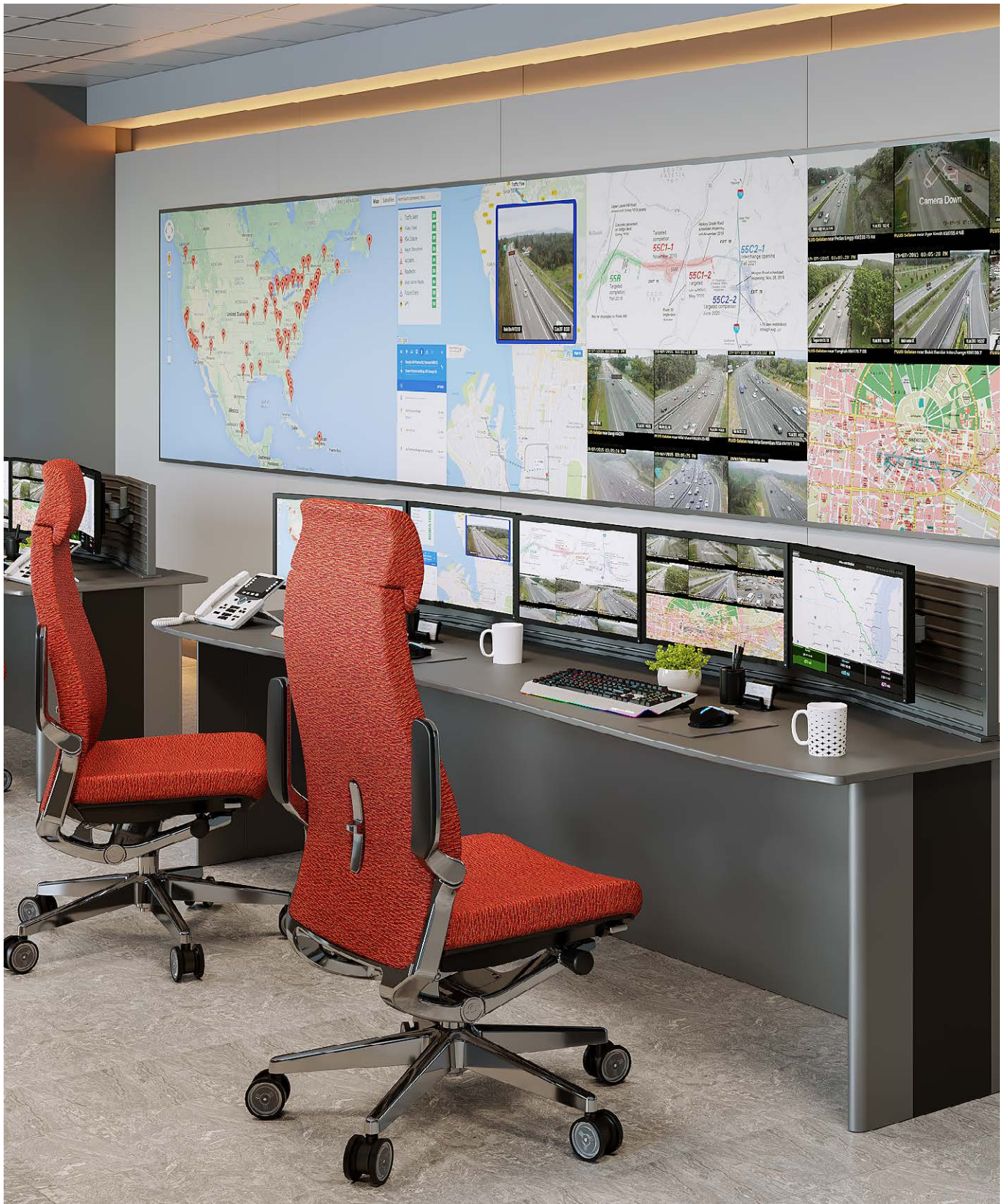


STEPHANIE 1401
LOUNGE
Leather Collection
Princess | 186 | Black

Co-working Office



NLC 2020-TC
ERGONOMIC TASK
Solid Collection
Felt Melange | FELT09 | Cove



NLC 2020D-FL
ERGONOMIC TASK
Pattern Collection
Fuse | FUSE09 | Carmine

Airtraffic Control Room



CXOtI 6200D-TI
HEAVY-DUTY
Stretch Collection
Mystic | C2 | Gray



CXOhd 6200HD-CH-TC3
HEAVY-DUTY
Stretch Collection
Mystic | C2 | Gray

Student Workroom



FRIO 2300-TC
ERGONOMIC TASK
Solid Collection
Felt Melange | FELT05 | Bluff



GXO 6301
GUEST

Stretch Collection
Moguls | MO2244 | Verdant

Multi-purpose Lounge



EMILY 610

SPECIALITY

Princess Leather & PVC Free Collection

Princess | 453 | Limone (Left)

Premier | PREMI205 | Sprig (Right)



EMILY 611
LOUNGE

Princess Leather
Princess | 453 | Limone

Office Lounge



JOHNNY 1509
LOUNGE
Solid Collection
Vox | VOX07 | Turquoise



AMALFI 1900-TC
CONFERENCE
Madras Leather
Madras | 430 | Poppy

Conference Room



EC4 421

GUEST

Stretch Collection

Moguls | MO2692 | Magenta



24/7hd 24/7hd-HR-TC3
HEAVY-DUTY
Madras Leather
Madras | 176 | Black

Workstation



MALIBU 2200-TC
ERGONOMIC TASK
Solid Collection
Vox | VOX10 | Goldenrod



LXO 6000-CH-TC
ERGONOMIC TASK
Solid Collection
Felt Melange | FELT21 | Tropic

Multi-use Workspace



NXO 6401-TC

STACKABLE

Stretch Collection

Beehive | BEE017 | Clementine



VXO 7280WH-TC
ERGONOMIC TASK
Classic Collection
Cashmere | CASH22 | Clay

Conference Room



EC1 135-TC CONFERENCE

Madras Leather
Madras | 176 | Black



NLC 2020-DS
STOOL

Pattern Collection
Fuse | FUSE11 | Ginger

Waiting Room



TONIK 1101

GUEST

Solid Collection

Felt Melange | FELT02 | Alert



OXO 6501-CH
GUEST

White Mesh with Chrome Legs



STRATFORD 2001 & 2011

LOUNGE

Princess Leather

Princess | 437 | Pesto



EC5 535D-TC3
EXECUTIVE

Princess Leather
Princess | 187 | Cashew



EXO 5880-TC3
ERGONOMIC TASK
Stretch Collection
Meridian | MER001 | Black



EC3 335D-TC3
EXECUTIVE

Leather Plus Collection
Leather Plus | V001-176 | Black

Conference Room



PRESIDER 7700D-CH-TC
EXECUTIVE

Princess Leather
Princess | 454 | Caribbean



EC2 235D-TC
CONFERENCE

Leather Plus Collection
Leather Plus | V001-176 | Black

Co-working Office



ERGO-LEARN 3280-TC

ERGONOMIC TASK

Solid Collection

Felt Melange | FELT09 | Cove



SHERMAN HD9000-TC3
HEAVY-DUTY
Classic Collection
Cashmere | CASH22 | Clay

Collaborative Workspace



VERONNA 7000
ERGONOMIC TASK
Solid Collection
Vox | VOX02 | Limelight



EC6 635D-TC3
EXECUTIVE

Princess Leather Collection
Princess | 453 | Limone (Inner)
Princess | 186 | Black (Outer)

Executive Office



KHROMA 3400D-TC
EXECUTIVE
PVC Free Collection
Canter | CANTER18 | Cordovan



REWARD 4800
EXECUTIVE

Leather Collection
Princess | 186 | Black

Co-working Office



BLESS 2100-TC
ERGONOMIC TASK

Solid Collection
Felt Melange | FELT15 | Greige



SXO 6100D-TC
ERGONOMIC TASK
Stretch Collection
Beehave | BEE08 | Gris

We Bring Our A-Game

Nightingale was named one of Canada's 50 Best Managed Companies because of our commitment to quality products, to environmental sustainability, and to our employees. We are always forward looking, setting industry standards rather than following them. Our drive to push the envelope of current chair technology and our sleek design styles allow for a product that looks just as good as it feels. The efforts of all our employees, from customer care and marketing down to the manufacturing plant have built our success as a company that is personable, reliable, and caring. Nightingale has received numerous design awards from prestigious organizations across the globe. These awards recognize the superior quality in both the design and engineering of our chairs.

Our Chairs are Better

- Top quality suppliers are held to our rigorous testing standards
- Limited Lifetime Warranty
- Designed to meet ANSI/ BIFMA Criteria

Not one to blindly follow trends, Nightingale's designs envision how office, guest, lounge, task, and executive chairs can serve multiple purposes and adjust to suit each individual user's needs. We stay ahead of the curve with innovative features that will spark industry change. Our philosophy of design is always holistic, focused on comfort and ease of use. We produce stylish, design-forward chairs that will elevate the aesthetic of any space and match the sensibilities of the user. For Nightingale, good design is about bridging real-world gaps: building chairs for people, not just gallery displays. We view the design as a constant evolution: for us, each chair is only the beginning.



nightingalechairs.com

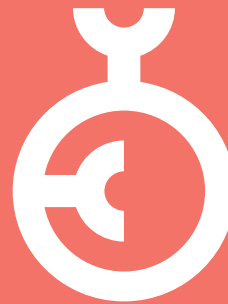
800 363 8954

*** IDA
APDC**

Design Excellence Awards
2018 WINNER



**INTERIOR
DESIGN**



**GERMAN
DESIGN
AWARD
2019**



**BEST ERGONOMIC MANUFACTURER
NORTH AMERICA**



**OFFICIAL WINNER
2016 SPARK PRODUCT DESIGN**



ISO 14001-9001 CERTIFIED
TB117-2013 COMPLIANT

Made in a 100% waste free manufacturing facility.

TEXTILE DISCLAIMER

Nightingale only upholsters with top quality materials.

Nightingale recommends ordering product samples at www.nightingalechairs.com/textiles before final purchase to get a more accurate representation of color. However, due to slight variations in dye lots, there can be slight color variations to received product.



Nightingale has made every effort to represent the colors and textures of these textiles, vinyls and leathers as accurately as possible. However, we cannot guarantee 100% accuracy, due to variations that occur in the printing process.

PRODUCT DISCLAIMER

Nightingale reserves the right to make changes in product design, construction or detail, and to discontinue any product or material without notice.



 **Nightingale**

nightingalechairs.com

800 363 8954